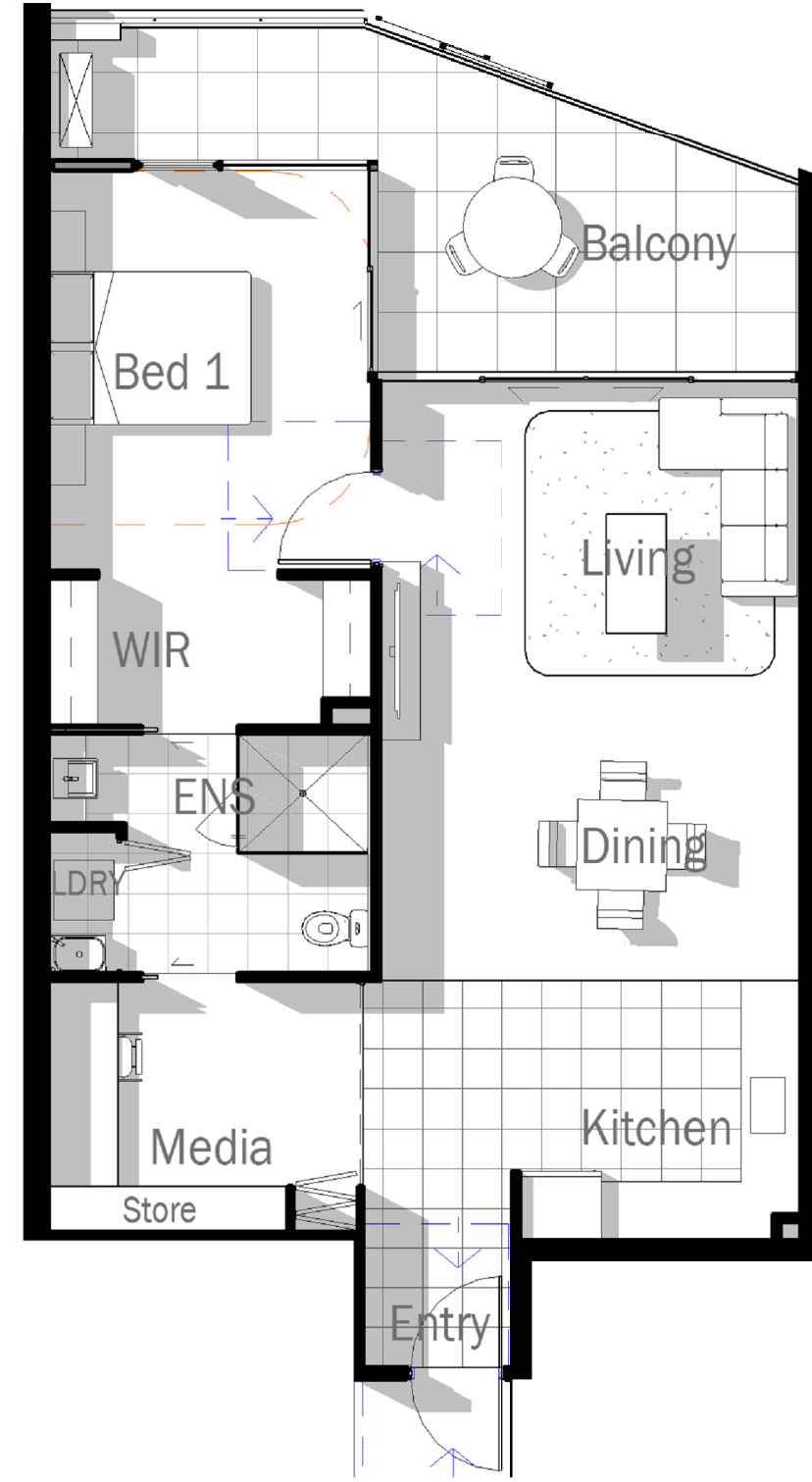
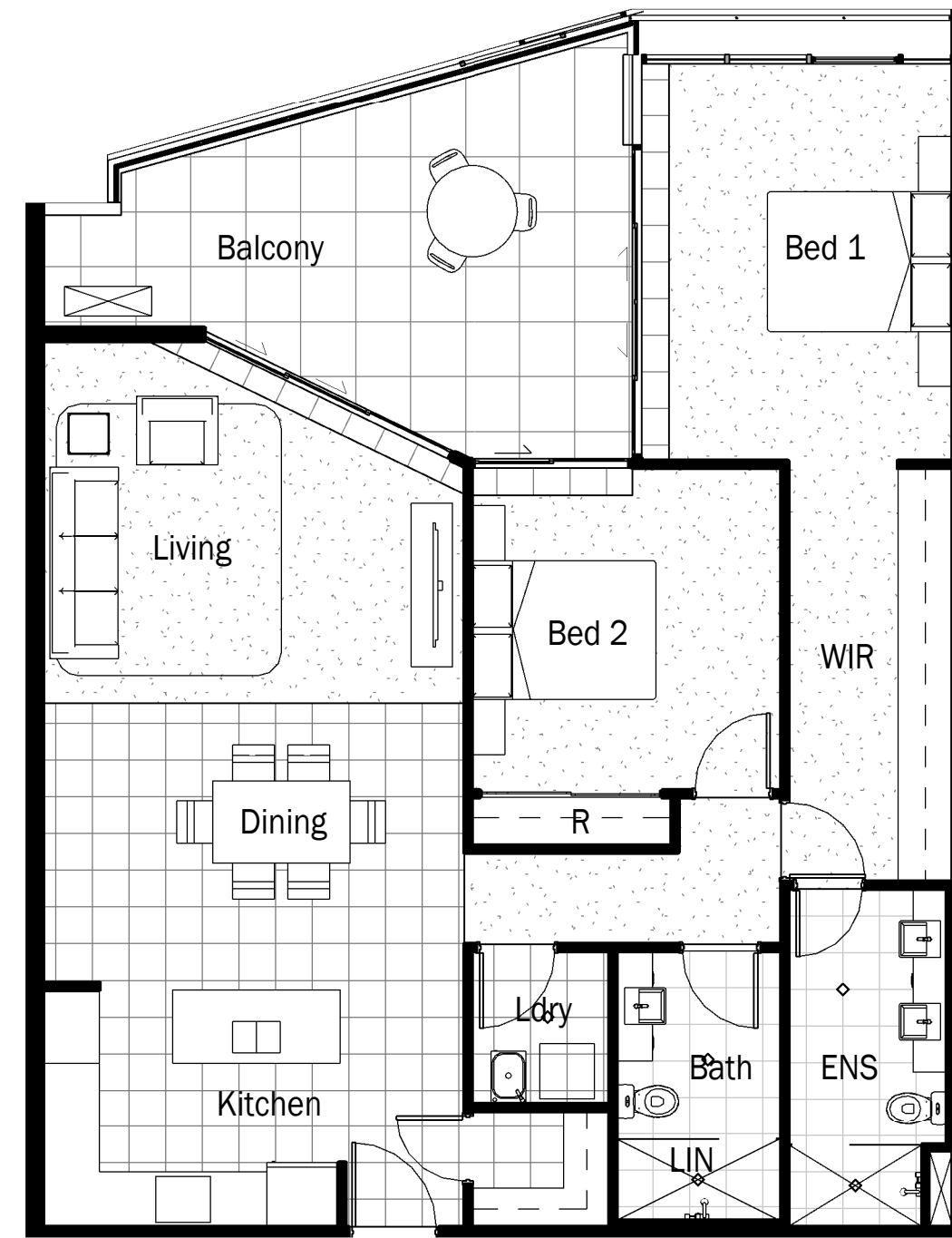


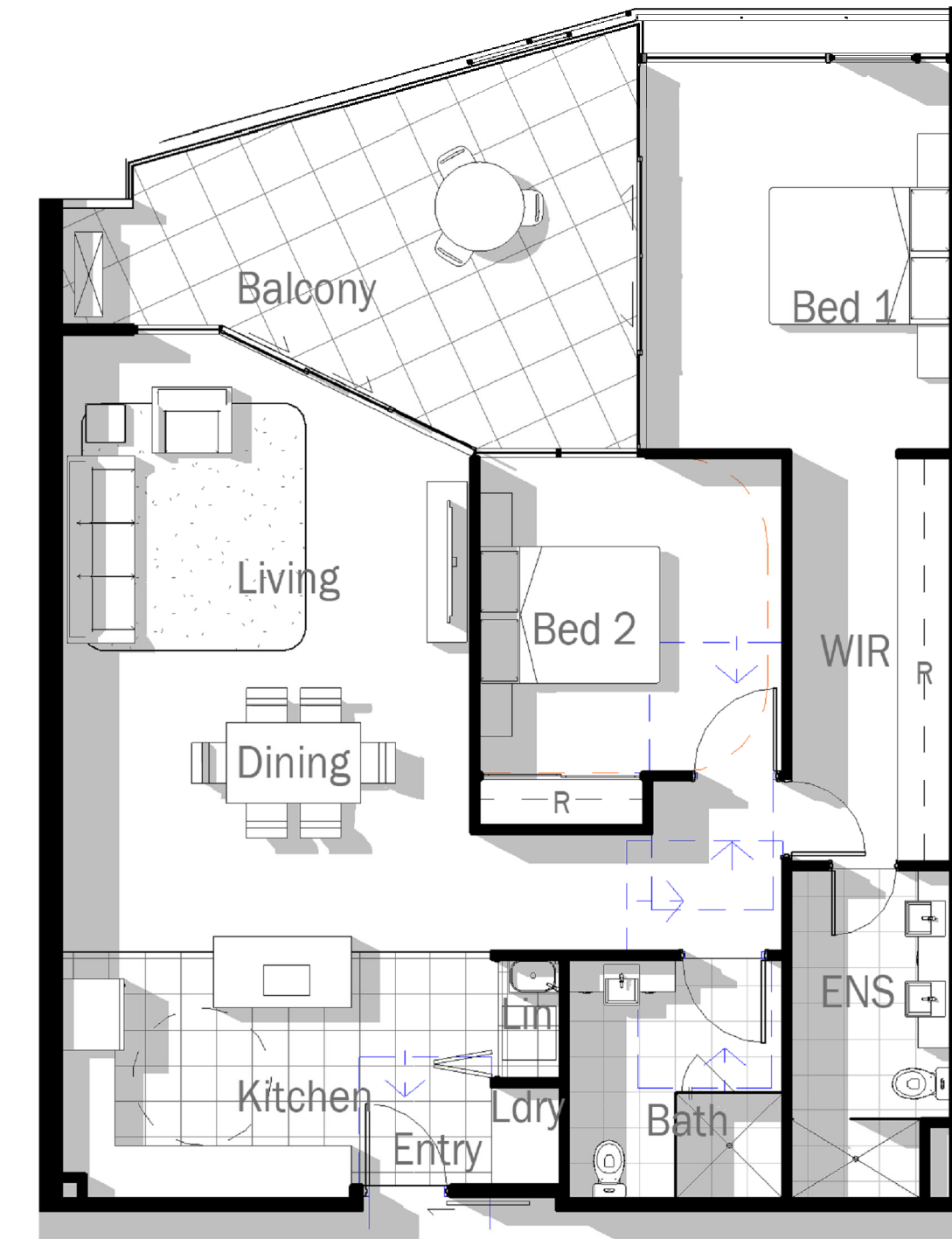
Typical Unit - (1A.1) Stage 1
Scale @ A1 1:75



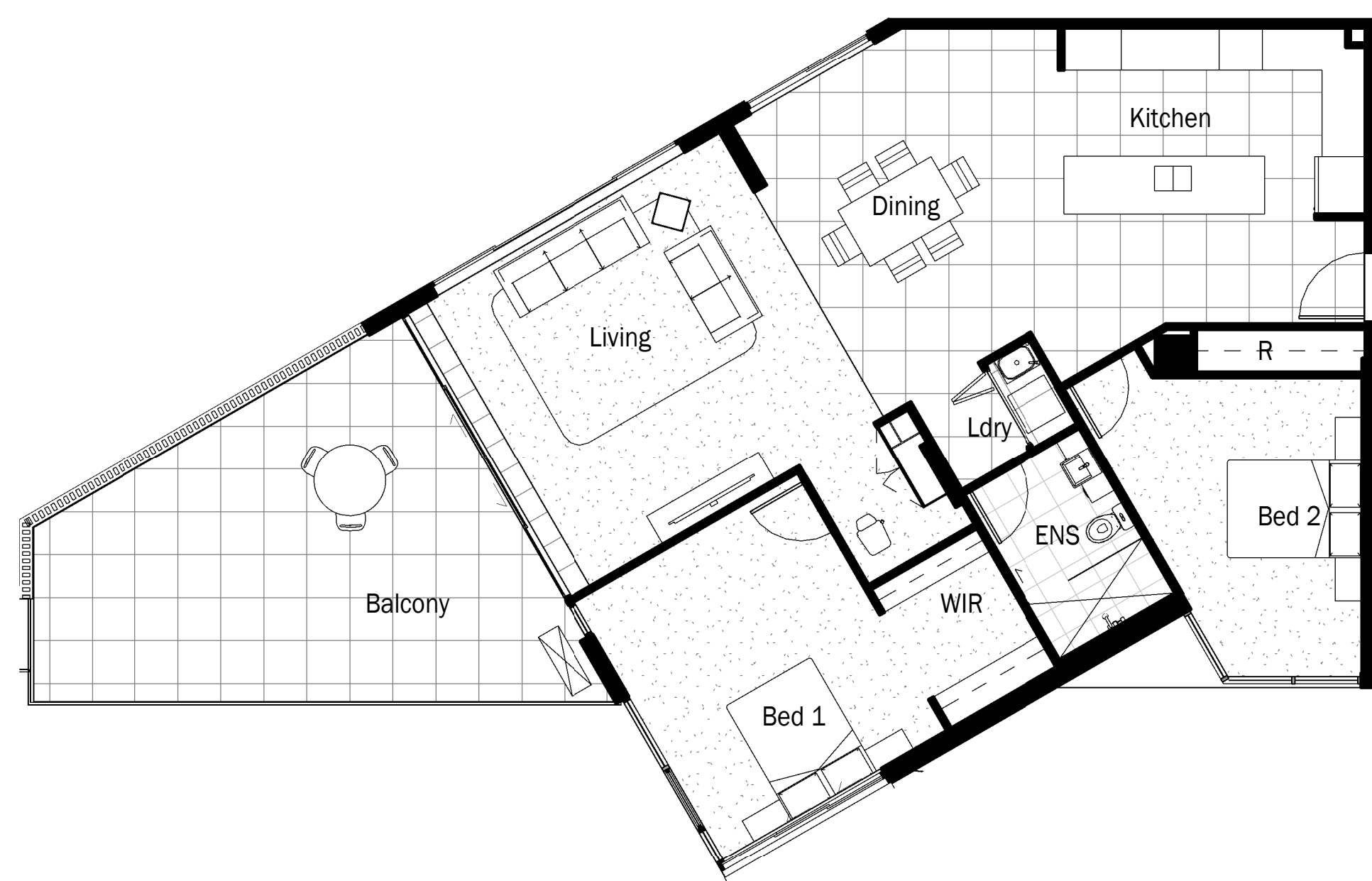
Typical Unit - (1A.1) layout for future compliance with AS4299
Scale @ A1 1:75



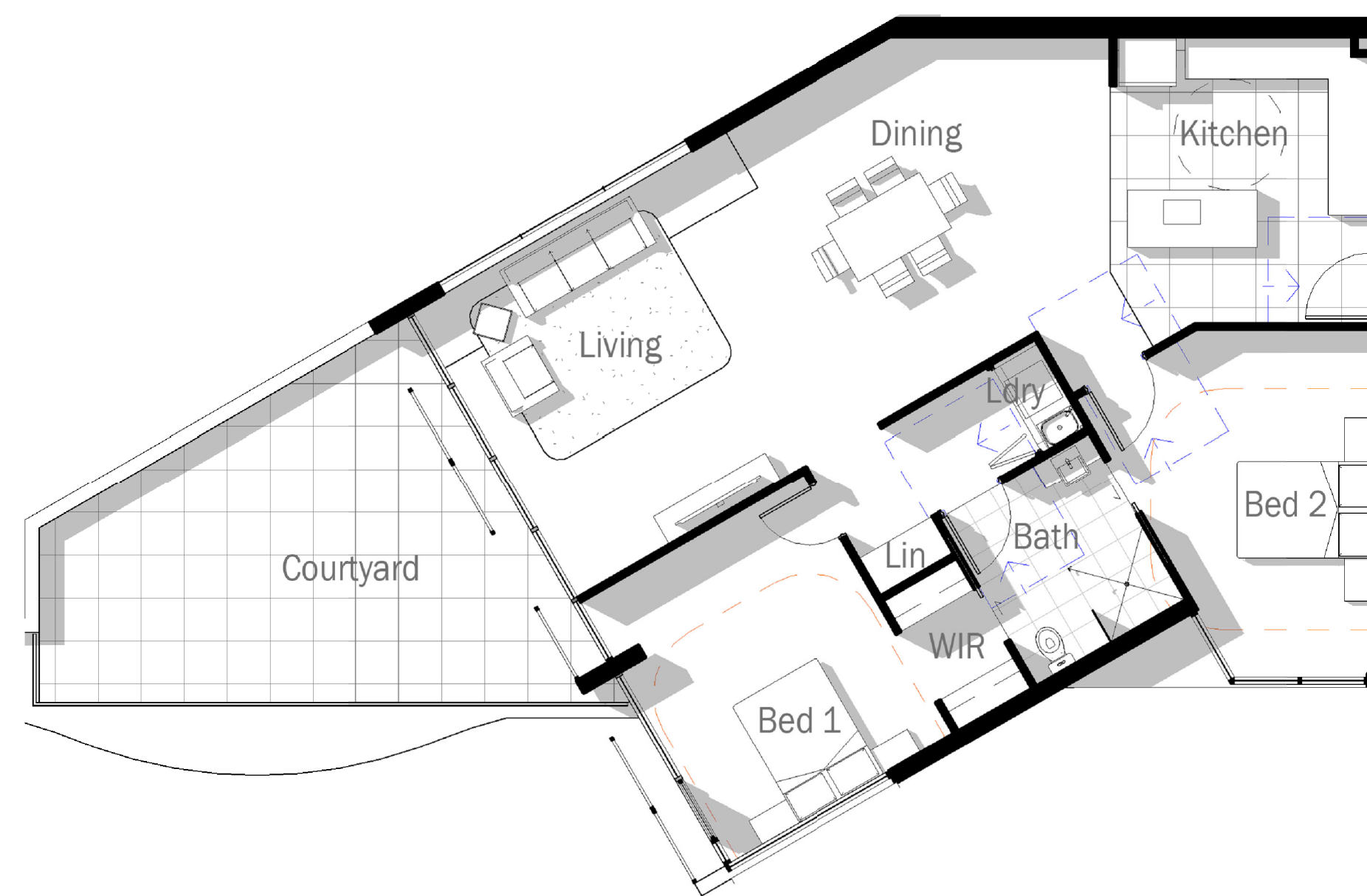
Typical Unit - (2A.1) Stage 1
Scale @ A1 1:75



Typical Unit - (2A.1) layout for future compliance with AS4299
Scale @ A1 1:75



Typical Unit - (2F.1) Stage 1
Scale @ A1 1:75



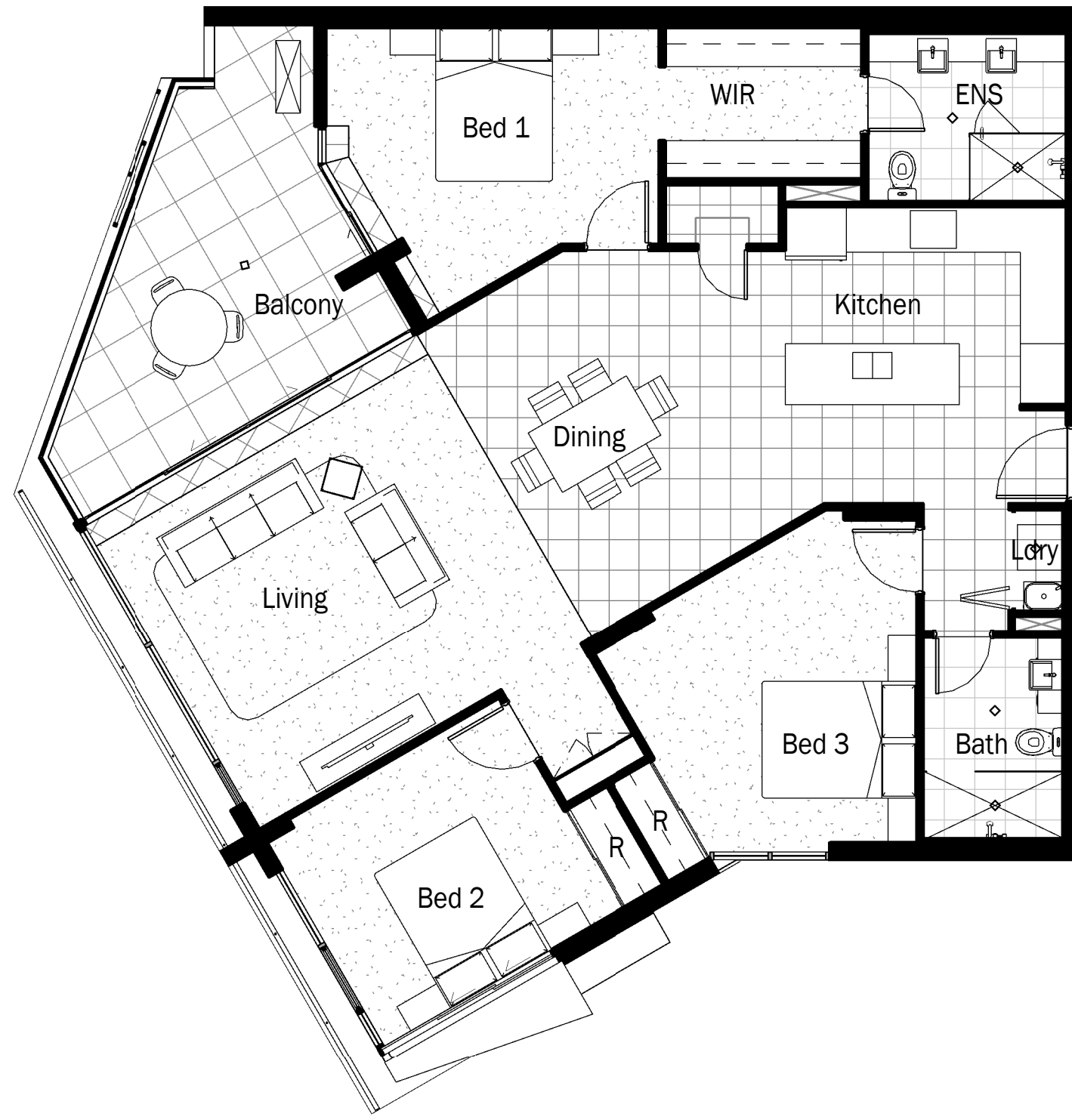
Typical Unit - (2F.1) layout for future compliance with AS4299
Scale @ A1 1:75

Note:
Unit layouts are adaptable
with minor building works for
AS4299 compliance

TVSarchitects
SOLARIS

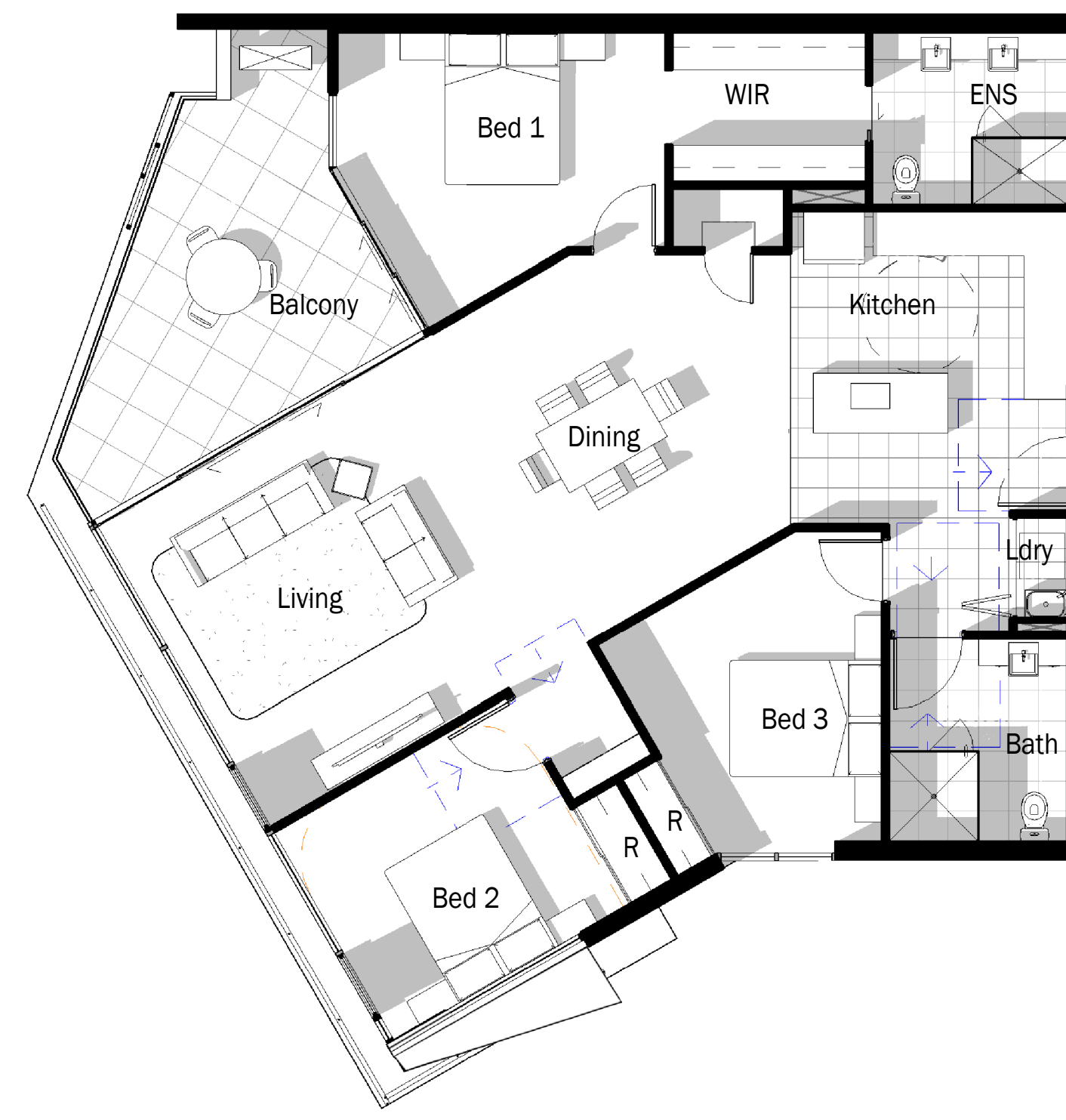
Forster Civic Precinct
Cnr Lake, West & Middle Street
For
Enyoc Pty Ltd
Adaptable Unit Layouts

5490.40d
0 2 4 6 8 10
Scale (m) 1:100 @A1 Scale (m) 1:200 @A3
N



Typical Unit - (3A.1) Stage 1

Scale @ A1 1 : 75



Typical Unit - (3A.1) layout for future compliance with AS4299

Scale @ A1 1 : 75



Typical Unit - (3A.2) Stage 1

Scale @ A1 1 : 75



Typical Unit - (3A.2) layout for future compliance with AS4299

Scale @ A1 1 : 75

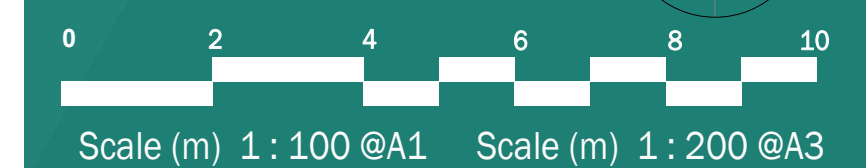
Note:
Unit layouts are adaptable
with minor building works for
AS4299 compliance

TVSarchitects
SOLARIS

Forster Civic Precinct
Cnr Lake, West & Middle Street
For
Enyoc Pty Ltd

Adaptable Unit Layouts

5490.40e





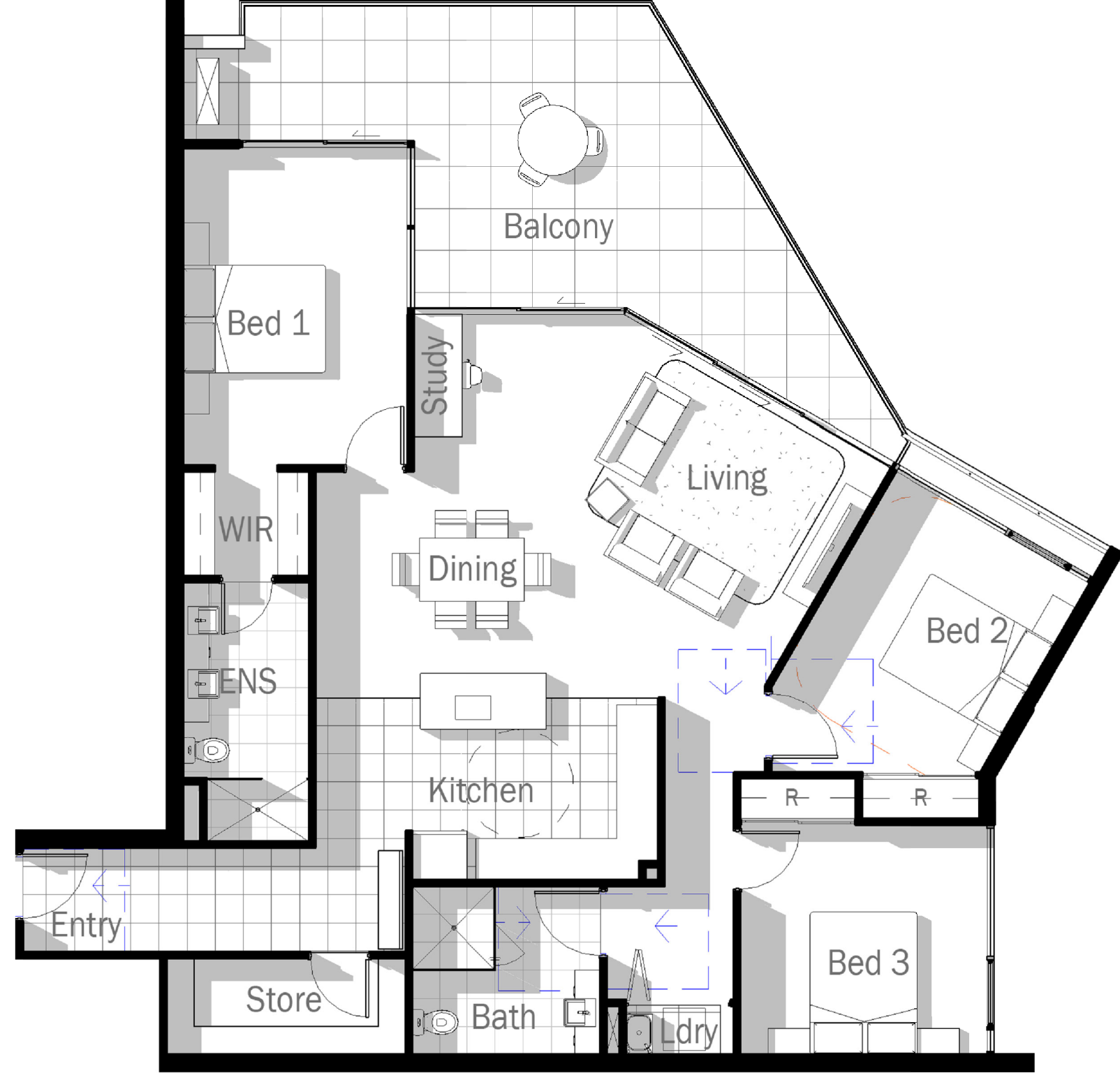
Typical Unit - (3A.3) Stage 1
Scale @ A1 1:75



Typical Unit - (3A.3) layout for future compliance with AS4299
Scale @ A1 1:75



Typical Unit - (3B.1) Stage 1
Scale @ A1 1:75



Typical Unit - (3B.1) layout for future compliance with AS4299
Scale @ A1 1:75

Note:
Unit layouts are adaptable
with minor building works for
AS4299 compliance

TVSarchitects

SOLARIS

Forster Civic Precinct
Cnr Lake, West & Middle Street

For
Enyoc Pty Ltd

Adaptable Unit Layouts

5490.40f

0 2 4 6 8 10
Scale (m) 1:100 @A1 Scale (m) 1:200 @A3